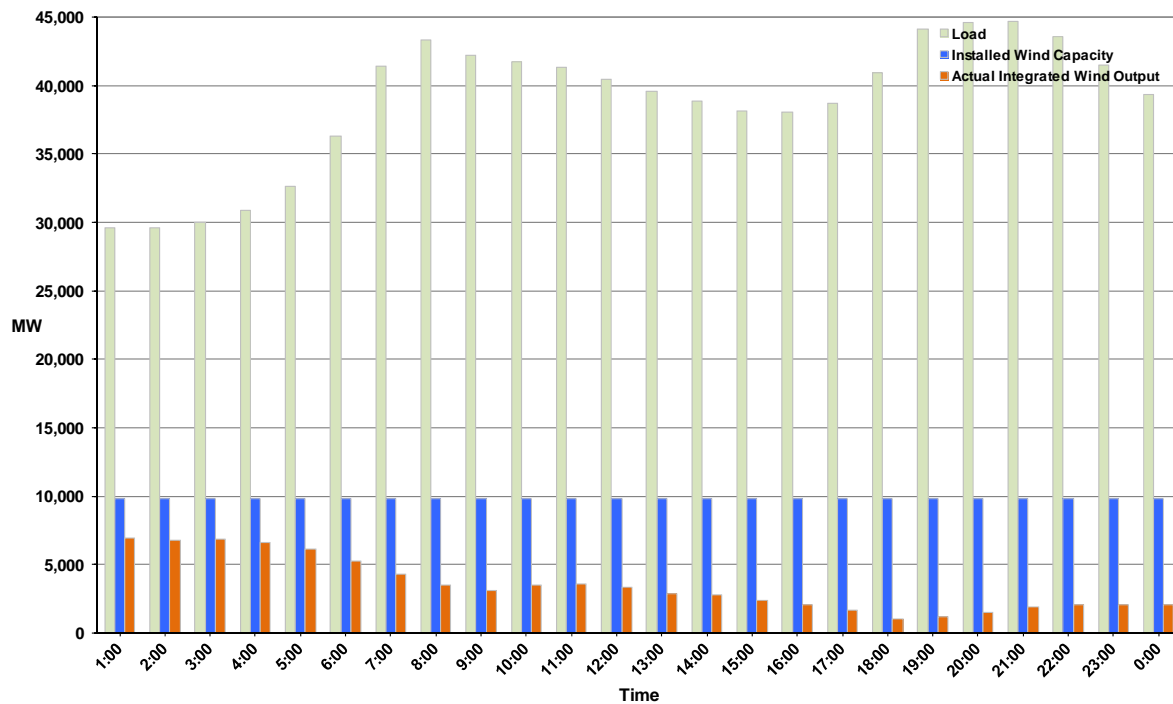




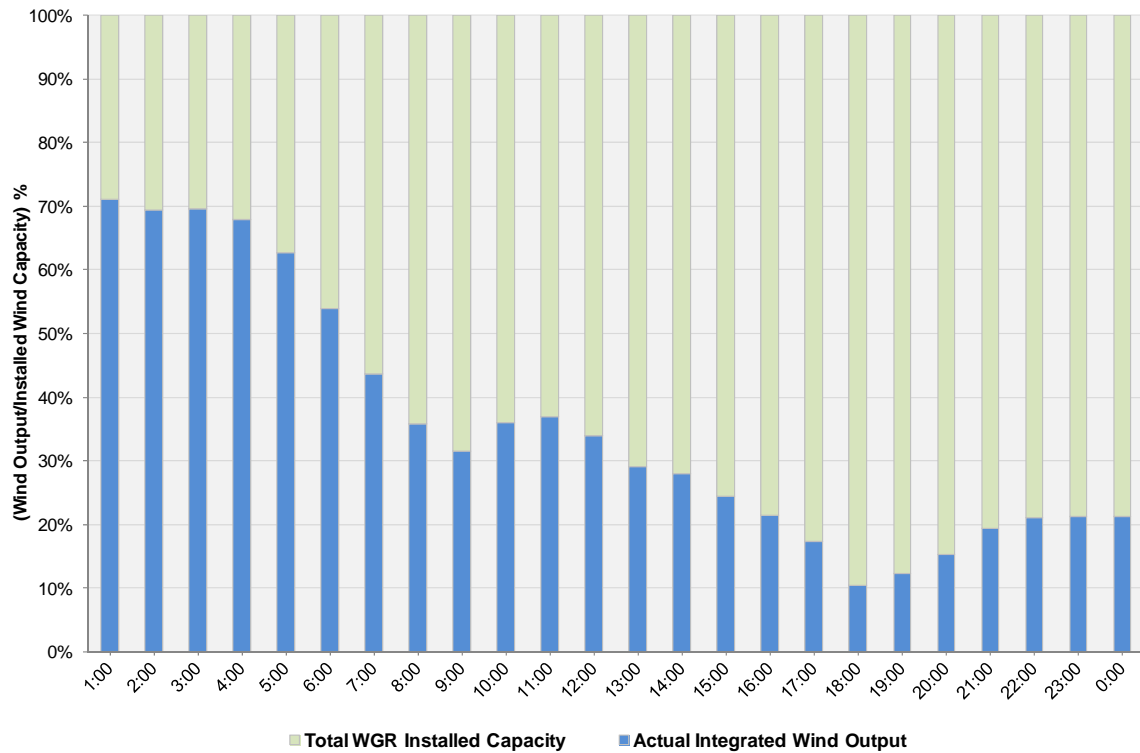
ERCOT Grid Operations Wind Integration Report: 01/12/12

| | |
|----------------------|------------------|
| Peak Load | 44,664 MW |
| Load Peak Hour (HE) | 21 |
| Wind over Peak | 1,900 MW |
| Wind Record 10/07/11 | 7,400 MW |
| Max Wind Value | 7,086 MW |
| Wind Peak Time | 00:34 |
| Wind Integration % | 24.02% |

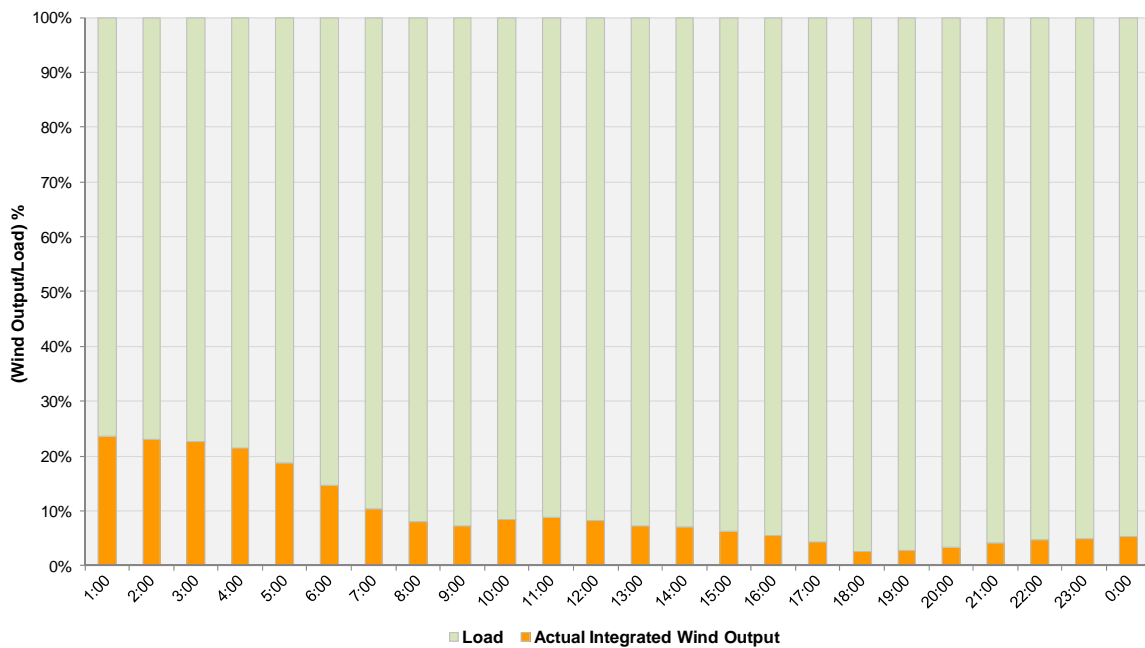
Hourly Average Actual Load vs. Actual Wind Output
01-12-2012



Actual Wind Output as a Percentage of the Total Installed Wind Capacity
01-12-2012



Actual Wind Output as a Percentage of the ERCOT Load
01-12-2012



ERCOT Load vs. Actual Wind Output 1/5/2012 - 1/12/2012

